

# Some Information on the dreaded Hand, Foot & Mouth Disease

What do you need to look out for?

- \*Rash
- \*Vomit
- \*Pain in Muscles
- \*Fever
- \*Sore Throat
- \*Stomach Ache
- \*Headache

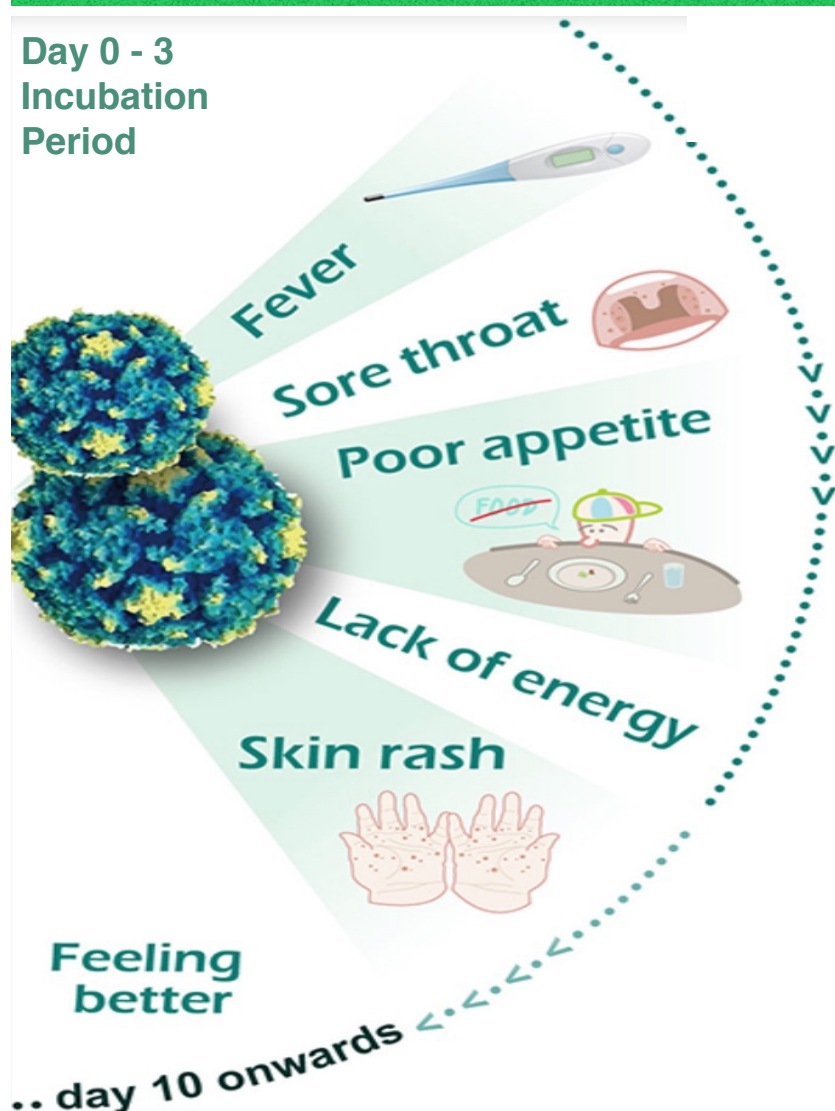
Where is the rash most likely visible?



Who is at risk?

- \*Mainly children under 10 Years
- \*Most common in children under 5 Years

**Day 0 - 3**  
**Incubation**  
**Period**



We have kids presenting with some of the symptoms...what can we do?

- \*Send the child home
- \*Wash down everything, from the walls to every soft toy
- \*Contact **Sprinkle Spray** to book your emergency spray
- \*\*It is important to note that washing all toys, walls, carpets, etc. is NOT ENOUGH to ensure that the HFMD stays out of your facility

**We do not spray over any person. We are the safer alternative.**

## OUR SERVICE IS ALL-INCLUSIVE

- \*We service you **once every 7 days**, ensuring your infection count is reset to zero
- \*If you are on a 6/12 month contract, you get access to our **FREE emergency spray service** which provides added protection in the event of a virus outbreak